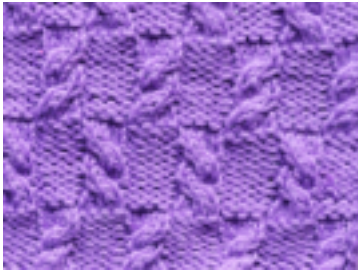


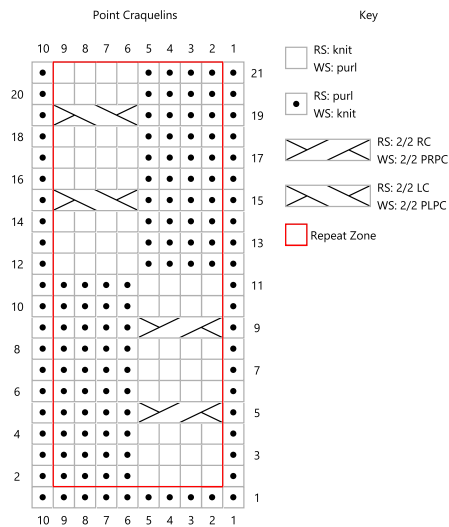
Twists stitches

Crackers stitches



<https://youtu.be/S8QMymdJlas>

In flat



Instructions

It can be done on an even number of stitches multiple of 8 in the case of flat knitting. More 2 stitches for edge sts

Row 1 (RS): Purl.

Row 2 (WS): K1, (k4, p4) repeat as many times as necessary, k1.

Rows 3 - 4: Knit the stitches as they appear.

Row 5: P1, (2/2 RC, p4) repeat as many times as necessary, p1.

Rows 6 - 8: Knit the stitches as they appear.

Row 9: Repeat row 5.

Row 10-11: Knit the stitches as they appear

Row 12: K1, (p4, k4) repeat as many times as necessary, k1.

Rows 13 -14: Knit the stitches as they appear.

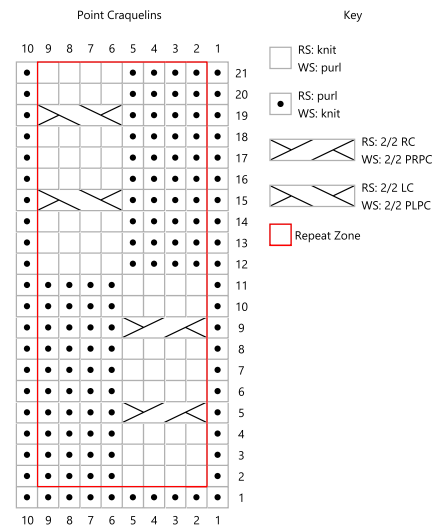
Row 15: P1, (p4, 2/2 LC) repeat as many times as necessary, p1.

Rows 16 - 18: Knit the stitches as they appear.

Row 19: repeat row 15.

Rows 20 - 21: Knit the stitches as they appear. .

In the circular



Instructions

It is advisable to do it on an even number of stitches multiple of 8 because this avoids an aesthetic problem at the starting point of the row. Because in the case of an odd number or not a multiple of 8, we will see the junction.

Row 1 (RS): Purl.

Row 2 (WS): (k4, p4) repeat as many times as necessary .

Rows 3 - 4: Knit the stitches as they appear.

Row 5: (2/2 RC, p4) repeat as many times as necessary.

Rows 6 - 8: Knit the stitches as they appear.

Row 9: Repeat row 5.

Row 10-11: Knit the stitches as they appear.

Row 12: Knit the stitches in the reverse order of the stitch shown.

Rows 13 -14: Knit the stitches as they appear.

Row 15: (p4, 2/2 LC) repeat as many times as necessary.

Rows 16 - 18: Knit the stitches as they appear.

Row 19: repeat row 15.

Rows 20 - 21: Knit the stitches as they appear.

Knit the stitches in the reverse order of the stitch shown: if there is a loop then knit or if there is a V, purl

2/2 LC : Slip next 2 stitches to cable needle and place at front of work, k2, then k2 from cable needle.

2/2 RC : Slip next 2 stitches to cable needle and place at back of work, k2, then k2 from cable needle.