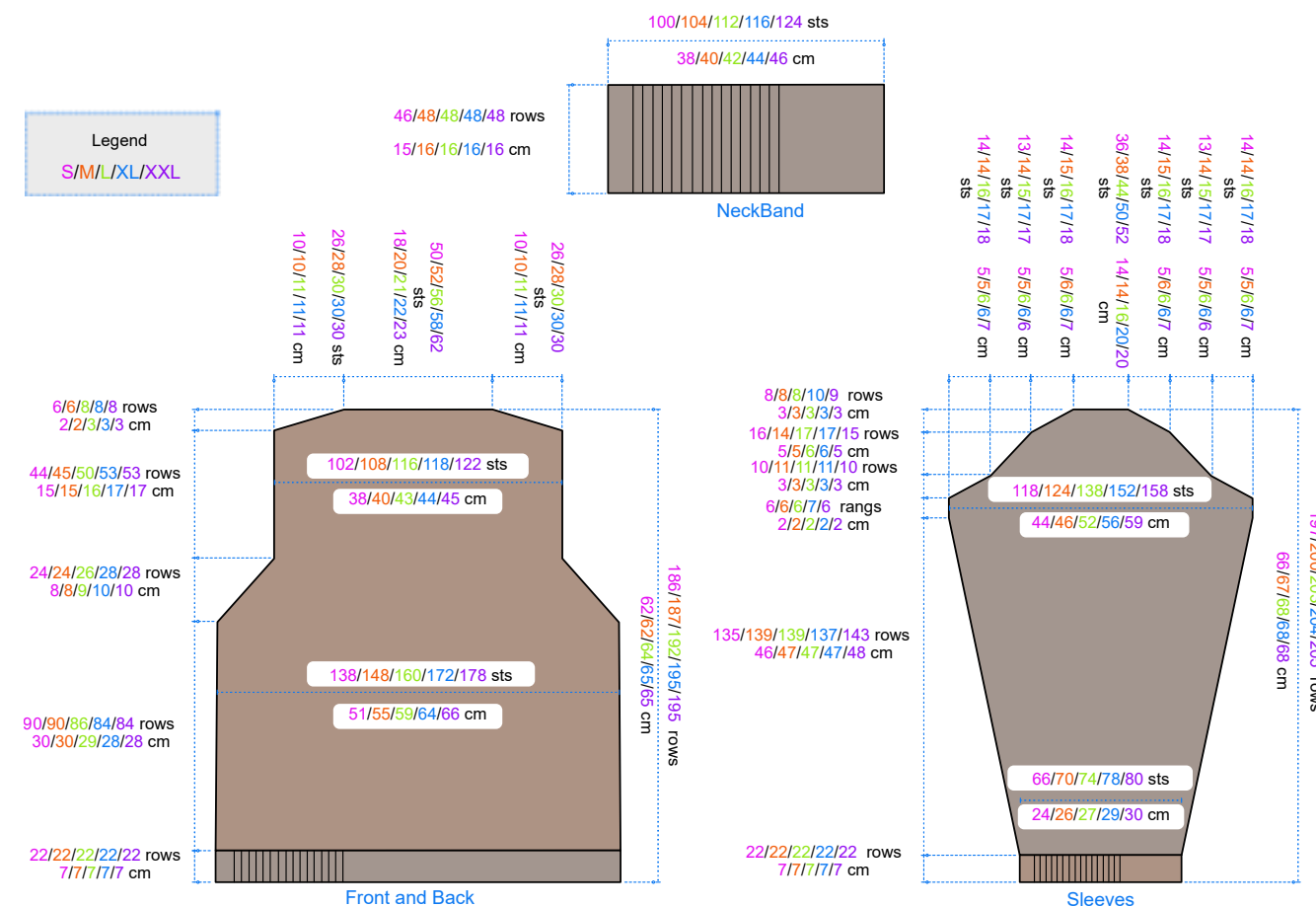


# High Neck Jumper with Twist 202004



Auteur : Cédric PETITCUENOT



**Stitch Glossary****knit** : Knit.**purl** : Purl.**1/3 LPC** : Slip next stitch to cable needle and place at front of work, p3, then k1 from cable needle.**1/3 PRPC** : Slip next 3 stitches to cable needle and place at back of work, p1, then p3 from cable needle.**1/3 RPC** : Slip next 3 stitches to cable needle and place at back of work, k1, then p3 from cable needle.**2/3 PLPC** : Slip next 2 stitches to cable needle and place at front of work, p3, then p2 from cable needle.**2/3 LPC** : Slip next 2 stitches to cable needle and place at front of work, p3, then k2 from cable needle.**2/3 PRPC** : Slip next 3 stitches to cable needle and place at back of work, p2, then p3 from cable needle.**2/3 RPC** : Slip next 3 stitches to cable needle and place at back of work, k2, then p3 from cable needle.**3/1 LC** : Slip next 3 stitches to cable needle and place at front of work, k1, then k3 from cable needle.**3/1 LPC** : Slip next 3 stitches to cable needle and place at front of work, p1, then k3 from cable needle.**3/1 RC** : Slip next stitch to cable needle and place at back of work, k3, then k1 from cable needle.**3/1 RPC** : Slip next stitch to cable needle and place at back of work, k3, then p1 from cable needle.**3/2 LC** : Slip next 3 stitches to cable needle and place at front of work, k2, then k3 from cable needle.**3/2 LPC** : Slip next 3 stitches to cable needle and place at front of work, p2, then k3 from cable needle.**3/2 RC** : Slip next 2 stitches to cable needle and place at back of work, k3, then k2 from cable needle.**3/2 RPC** : Slip next 2 stitches to cable needle and place at back of work, k3, then p2 from cable needle.**3/3 LC** : Slip next 3 stitches to cable needle and place at front of work, k3, then k3 from cable needle.**3/3 LPC** : Slip next 3 stitches to cable needle and place at front of work, p3, then k3 from cable needle.**3/3 RC** : Slip next 3 stitches to cable needle and place at back of work, k3, then k3 from cable needle.**3/3 RPC** : Slip next 3 stitches to cable needle and place at back of work, k3, then p3 from cable needle.**Indications****Size:** S/M/L/XL/XXL**Garment measurements:****Chest :** 92/100/107/117/122 cm**Length :** 62/62/64/65/65 cm**Materials:****C1:** Hobbii Rainbow Cotton 8/4 300/300/300/350/450 g = 6/6/6/7/9 ball Volcano Grey (012).**C2:** Hobbii Rainbow Cotton 8/4 250/250/250/300/400 g = 5/5/5/6/8 ball Grey Brown (005)**Needle size:** N° 2½ (US 1.5) et 3 (US 2.5) mm**A circular needle :** N° 2½ (US 1.5) (for the NeckBand).**Instructions****Pattern I:****2.5mm needles:** 2.5mm needles: 1 edge st, \*p1,k2, p1\*, rep from \* to \*, ending with 1 edge st. On subsequent rows knit the sts as they face you (= k2, p2 rib). In the rnd = k2, p2. (if you don't know refer to my next video )**Pattern II:****3mm needles:** reverse stocking st = RS p, WS k.**Pattern III:****3mm needles:** cable pattern, according to chart. Repeat the red zone.**Pattern IV:****3mm needles:** cable pattern, according to chart. Repeat the red zone.**Gauge:****Pattern II:** 3mm needles**27 sts** = 10 cm (4") wide.**30 rows** = 10 cm (4") long.**Point III:** 3mm needles (measured stretched)**28 sts** = 10 cm (4") wide.**31 rows** = 10 cm (4") long.

**Back and Front:** With color C2 Cable cast on 3mm needle (if you don't know how to do this Cable On refer to my video <https://youtu.be/bE7ZSAfmFxc?t=14>) 138/148/160/172/178 sts

**Rows 1 - 22:** With 2.5mm needles knit 7cm in pattern I and with color C2.

**Rows 23 - 112/112/108/106/106:** After 7 cm, continue as follows with color C1, k, 15/20/8/14/17 sts in pattern II, 108/108/144/144/144 sts in pattern III (knit 3x/3x/4x/4x/4x the pattern which is in the red area), 15/20/8/14/ sts in pattern II, k (138/148/160/172/178 sts).

**Armholes:** At a length of 37/37/36/35/35 cm

**Rows 113/113/109/107/107 - 124/128/126/132/134:** cast off at each end every 2 rows, 6x2sts/8x2sts/9x2sts/13x2sts/14x2sts. Continue to knit stitches as planned from the start.(114/116/124/120/122 sts).

**Row 125/129/127/133/:** Continue to knit stitches as planned from the start.

**Rows 126/130/128/134/- 136/136/134/134/:** cast off at each end every 2 rows 6x1sts/4x1sts/4x1sts/1x1sts/0x1sts. Continue to knit stitches as planned from the start. (102/108/116/118/122 sts).

**Rows 137/137/135/135/135- 180/181/184/187/187:** Continue to knit stitches as planned from the start.

**Shoulders:** When armhole measures 23/23/25/27/27 cm,

**Rows 181/182/185/188/188- 180/181/184/187/195:** cast off at each end every 2 rows 1x8sts + 2x9sts/2x9sts + 1x10sts/2x7sts + 2x8sts/2x7sts + 2x8sts/2x8sts + 2x7sts. Continue to knit stitches as planned from the start. (50/52/56/58/62 sts).

**Encolure:** put the 50/52/56/58/62 sts on hold.

**Sleeves:** With color C2 Cable cast on 3mm needle (if you don't know how to do this Cable On refer to my video <https://youtu.be/bE7ZSAfmFxc?t=14>) 66/70/74/78/80 sts

**Rows 1 - 22:** With 2.5mm needles knit 7cm in pattern I and with color C1.

**Row 23 :** After 7 cm du montage, continue as follows with color C2 k, 6/8/10/3/4 sts in pattern t II, 54/54/54/72/72 sts in pattern IV ( knit 3x/3x/3x/4x/4x the pattern which is in the red area), 6/8/10/3/4 sts in pattern = II, k (66/70/74/78/80 sts).

**Rows 24 - 157/161/161/159/165:** aug. de ch côté 22x1sts every 5 rgs+ 4x1sts every 4 rgs/ 24x1sts every 5 rows + 3x1sts every 4 rows/ 22x1sts every 4 rows + 10x1sts every 5 rows/ 12x1sts every 3 rows + 25x1sts every 4 rows/ 13x1sts every 3rgs + 26x1sts every 4 rows. Continue to knit stitches as planned from the start.(118/124/138/152/158 sts).

**Rows 158/162/162/160/166 - 163/167/167/166/171:** Continue to knit stitches as planned from the start.(118/124/138/152/158 sts).

**Arrondis:**

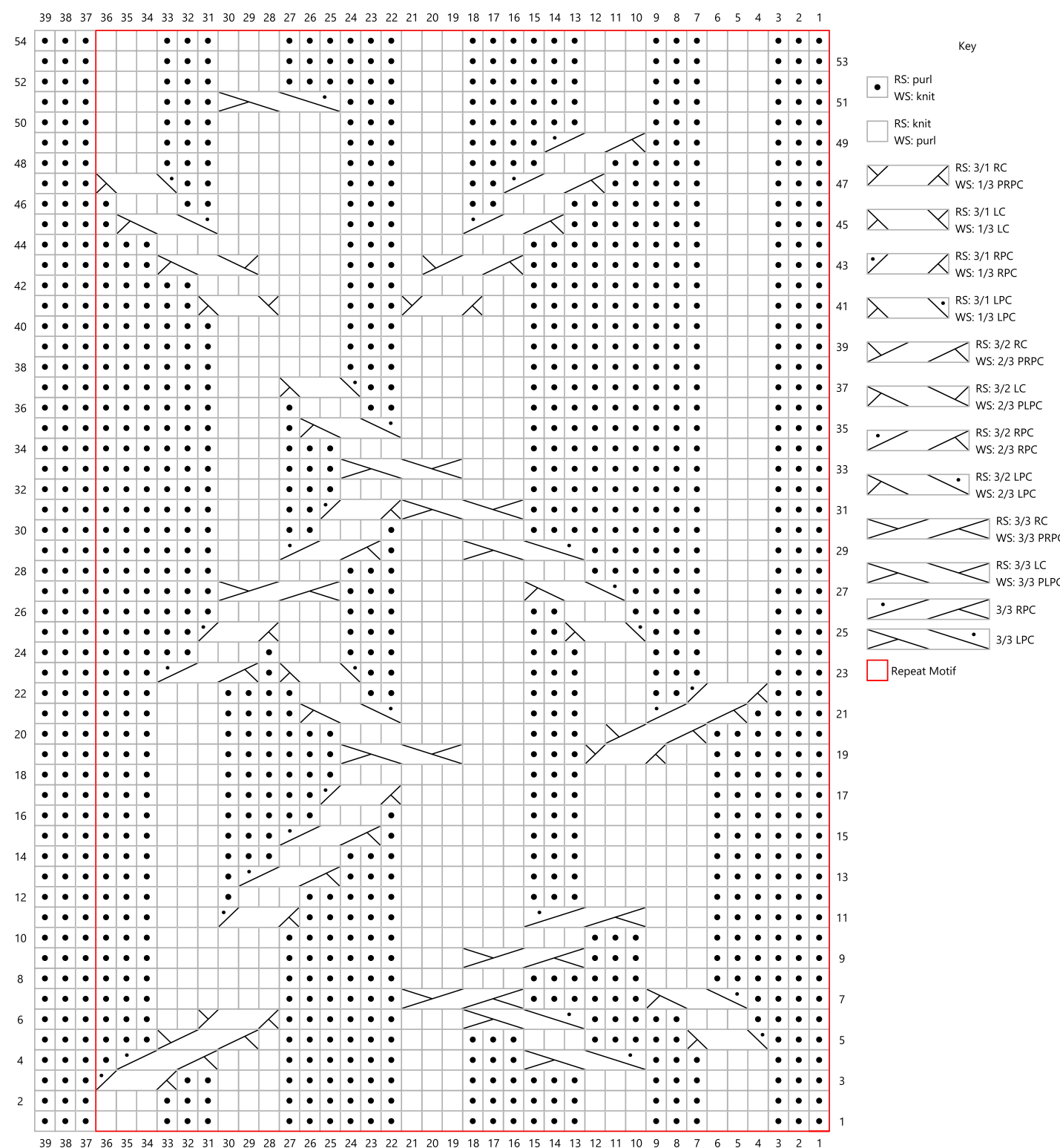
**Rows 164/168/168/167/172 - 157/161/161/106/106:** cast off at each end every 2 rows 4x3sts + 1x2sts + 2x1sts + 5x2sts + 1x3sts + 3x4sts/4x3sts + 1x2sts + 7x2sts + 1x3sts + 3x4sts/1x4sts + 4x3sts + 1x1sts + 7x2sts + 4x4sts/2x4sts + 3x3sts + 8x2sts + 2x3sts + 3x4sts/3x4sts + 2x3sts + 5x2sts + 1x3sts + 3x4sts + 2x5sts. Continue to knit stitches as planned from the start.(36/38/44/50/52 sts).

**Row 118/124/138/152/158 :** cast off 36/38/44/50/52 remaining stitches

**Finitions:** Close seams back, Front and Sleeves.

**Neckband:** With the Circular needle take back the 100/104/112/116/124 stspu on hold.With color C2 Purl 1 rnd, then knit pattern I in the rnd. Loosely cast off all sts when neckband measures 15/16/16/16/16 cm (or 46/48/48/48/48 rows). Set in sleeves.

Pattern III



**Instructions Point III**

**Row 1 (RS):** ((P3, k3) × 2, (p6, k3) × 2, p3, k3), p3. (39 sts)

**Row 2 (WS):** K3, (p3, k3, (p3, k6) × 2, (p3, k3) × 2).

**Row 3:** ((P3, k3) × 2, (p6, k3) × 2, p2, 3/1 RPC), p3.

**Row 4:** K3, (k1, 2/3 RPC, p3, k6, p3, k3, 3/3 LPC, k3, p3, k3).

**Row 5:** (P3, 3/1 LPC, p5, k3, p3, k3, p6, k1, 3/2 RC, p3), p3.

**Row 6:** K3, (k3, p2, 1/3 PRPC, k6, p3, 3/3 LPC, k5, p3, k4).

**Row 7:** (P4, 3/2 LPC, p6, 3/3 RC, p6, k6, p3), p3.

**Row 8:** K3, (k3, (p6, k6) × 2, p3, k6).

**Row 9:** (P6, k3, p3, 3/3 RC, k3, p6, k6, p3), p3.

**Row 10:** K3, (k3, p6, k6, p9, k3, p3, k6).

**Row 11:** (P6, k3, 3/3 RPC, k6, p5, 3/1 RPC, k3, p3), p3.

**Row 12:** K3, (k3, p3, k1, p3, k5, p6, k3, p6, k6).

**Row 13:** (P6, (k6, p3) × 2, 3/2 RPC, p1, k3, p3), p3.

**Row 14:** K3, ((k3, p3) × 2, (k3, p6) × 2, k6).

**Row 15:** (P6, k6, p3, k6, p1, 3/2 RPC, p3, k3, p3), p3.

**Row 16:** K3, (k3, p3, k5, p3, k1, p6, k3, p6, k6).

**Row 17:** (P6, k6, p3, k6, 3/1 RPC, p5, k3, p3), p3.

**Row 18:** K3, (k3, p3, k6, p9, k3, p6, k6).

**Row 19:** (P6, k2, 3/1 RC, p3, k3, 3/3 LC, p6, k3, p3), p3.

**Row 20:** K3, (k3, p3, k6, p9, k3, p1, 2/3 PRPC, k6).

**Row 21:** (P4, 3/2 RPC, k3, p3, k6, 3/2 LPC, p4, k3, p3), p3.

**Row 22:** K3, (k3, p3, k4, p3, k2, p6, k3, p3, k2, 1/3 RPC, k3).

**Row 23:** ((P3, k3) × 2, p3, k6, p2, 3/1 LPC, p1, 3/2 RPC, p3), p3.

**Row 24:** K3, (k5, p3, k1, p3, k3, p6, (k3, p3) × 2, k3).

**Row 25:** (P3, k3, p3, 3/1 LPC, p2, k6, p3, k3, 3/1 RPC, p5), p3.

**Row 26:** K3, (k6, p6, k3, p6, k2, p3, k4, p3, k3).

**Row 27:** (P3, k3, p4, 3/2 LPC, k6, p3, 3/3 RC, p6), p3.

**Row 28:** K3, (k6, p6, k3, p9, k6, p3, k3).

**Row 29:** (P3, k3, p6, 3/3 LPC, k3, p1, 3/2 RPC, k3, p6), p3.

**Row 30:** K3, (k6, p3, k2, p3, k1, p6, k9, p3, k3).

**Row 31:** (P3, k3, p9, 3/3 LC, 3/1 RPC, p2, k3, p6), p3.

**Row 32:** K3, (k6, p3, k3, p9, k9, p3, k3).

**Row 33:** (P3, k3, p9, k3, 3/3 LC, p3, k3, p6), p3.

**Row 34:** Repeat Row 32.

**Row 35:** (P3, k3, p9, k6, 3/2 LPC, p1, k3, p6), p3.

**Row 36:** K3, (k6, p3, k1, p3, k2, p6, k9, p3, k3).

**Row 37:** (P3, k3, p9, k6, p2, 3/1 LPC, k3, p6), p3.

**Row 38:** K3, (k6, p6, k3, p6, k9, p3, k3).

**Row 39:** (P3, k3, p9, k6, p3, k6, p6), p3.

**Row 40:** Repeat Row 38.

**Row 41:** (P3, k3, p9, k2, 3/1 RC, p3, k3, 3/1 LC, p5), p3.

**Row 42:** K3, (k5, p7, k3, p6, k9, p3, k3).

**Row 43:** (P3, k3, p9, 3/2 RC, k1, p3, k4, 3/2 LC, p3), p3.

**Row 44:** K3, (k3, p9, k3, p6, k9, p3, k3).

**Row 45:** (P3, k3, p7, 3/2 RPC, k3, p3, k6, 3/2 LPC, p1), p3.

**Row 46:** K3, (k1, p3, k2, p6, k3, p3, k2, p3, k7, p3, k3).

**Row 47:** (P3, k3, p5, 3/2 RPC, p2, k3, p3, k6, p2, 3/1 LPC), p3.

**Row 48:** K3, (p3, k3, p6, k3, p3, k4, p3, k5, p3, k3).

**Row 49:** (P3, k3, p3, 3/2 RPC, p4, k3, p3, k6, p3, k3), p3.

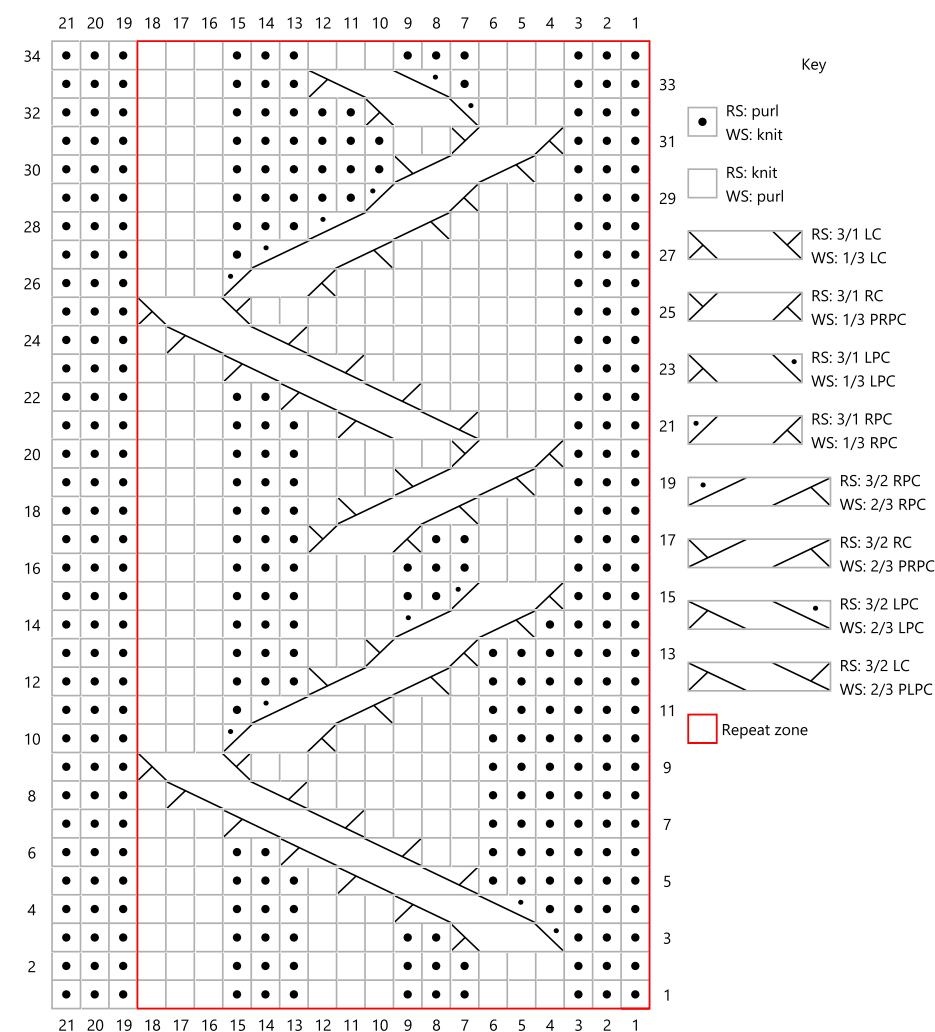
**Row 50:** K3, (p3, k3, p6, k3, p3, k6, (p3, k3) × 2).

**Row 51:** ((P3, k3) × 2, p6, k3, p3, 3/3 LPC, p3, k3), p3.

**Row 52:** Repeat Row 2.

**Row 53:** Repeat Row 1.

**Row 54:** Repeat Row 2.

**Pattern IV****Instructions Point IV**

**Row 1 (RS):** ((P3, k3) × 3), p3. (21 sts)

**Row 2 (WS):** K3, ((p3, k3) × 3).

**Row 3:** (P3, 3/1 LPC, p2, k3, p3, k3), p3.

**Row 4:** K3, (p3, k3, p3, 2/3 LPC, k4).

**Row 5:** (P6, 3/2 LC, k1, p3, k3), p3.

**Row 6:** K3, (p3, k2, 2/3 PLPC, p2, k6).

**Row 7:** (P6, k4, 3/2 LC, k3), p3.

**Row 8:** K3, (p1, 2/3 PLPC, p6, k6).

**Row 9:** (P6, k8, 3/1 LC), p3.

**Row 10:** K3, (p3, 1/3 RPC, p5, k6).

**Row 11:** (P6, k3, 3/2 RPC, p1, k3), p3.

**Row 12:** K3, (p3, k3, 2/3 PRPC, p1, k6).

**Row 13:** (P6, 3/1 RC, k2, p3, k3), p3.

**Row 14:** K3, (p3, k3, p3, 2/3 RPC, k4).

**Row 15:** (P3, 3/1 RPC, p2, k3, p3, k3), p3.

**Row 16:** Repeat Row 2.

**Row 17:** (P3, k3, p2, 3/1 RC, p3, k3), p3.

**Row 18:** K3, (p3, k3, p1, 2/3 PRPC, p3, k3).

**Row 19:** (P3, k1, 3/2 RC, k3, p3, k3), p3.

**Row 20:** K3, (p3, k3, p5, 1/3 PRPC, k3).

**Row 21:** (P3, k3, 3/2 LC, k1, p3, k3), p3.

**Row 22:** K3, (p3, k2, 2/3 PLPC, p5, k3).

**Row 23:** (P3, k7, 3/2 LC, k3), p3.

**Row 24:** K3, (p1, 2/3 PLPC, p9, k3).

**Row 25:** (P3, k11, 3/1 LC), p3.

**Row 26:** K3, (p3, 1/3 RPC, p8, k3).

**Row 27:** (P3, k6, 3/2 RPC, p1, k3), p3.

**Row 28:** K3, (p3, k3, 2/3 RPC, p4, k3).

**Row 29:** (P3, k3, 3/1 RPC, p5, k3), p3.



**Row 30:** K3, (p3, k6, 2/3 PRPC, p1, k3).

**Row 31:** (P3, 3/1 RC, k2, p6, k3), p3.

**Row 32:** K3, (p3, k5, 1/3 LPC, p3, k3).

**Row 33:** (P3, k3, p1, 3/2 LPC, p3, k3), p3.

**Row 34:** Repeat Row 2.

Men (Height 180 cm)									
Sizes (European sizes)	S	S	M	M	L	L	XL	XL	XXL
	44	46	48	50	52	54	56	58	60
Chest cm	88	92	96	100	104	107	112	117	122
Waist cm	78	82	86	90	94	98	104	110	116
Back Length cm	49	49	49	49	49	49	49	49	49
Sleeve length cm	64	64	64	64	64	64	64	64	64
Neck cm	37	38	39	40	41	42	43	44	45

